

# DC POWER TECHNOLOGIES

*TOMORROW'S TECHNOLOGY FOR TODAY'S APPLICATION*

**MODULAR CHARGING REINVENTED**

## E970

**97% CHARGING  
EFFICIENCY**

**RELIABILITY**

**CONNECTIVITY**

**SCALABILITY**

**FLEXIBILITY**





## E973

Three Module Cabinet  
300 Amp Max Output



## E976

Six Module Cabinet  
600 Amp Max Output



## Peak Energy Efficiency 97.6%

- Superior efficiency allows the chargers to be exceptionally compact and power-dense.
- Ready to use with Automated Demand Response energy management systems.
- Automatic scheduled shut down and delayed start up to reduce peak demand cost.

Visit our website to compare your energy savings in dollars and cents  
<https://dcpowertechnologies.com/technical-support/calculator/>



## Reliability

cUL listed to U.S. and Canadian national rules

- Meets and exceeds California Energy Commission efficiency standard.
- Power Module redundancy ensures continued operation even in the case of fault.
- Designed and engineered by the same team as the XHF series charger, building upon its reputation for reliability.

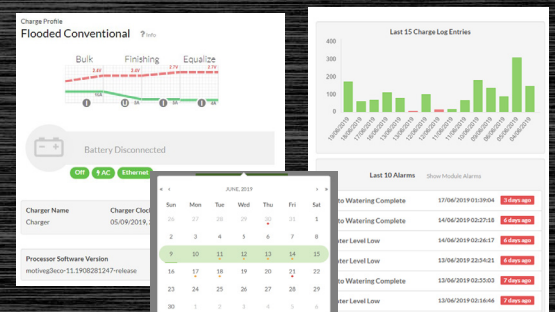
## Connectivity

- Connect charger to your device using USB, Wi-Fi or Ethernet.
- Compatible with the existing BMM-BT battery module, connect a charger to the existing battery module via power line communication (PLC) or Bluetooth.
- No proprietary software required, use any device with a web browser to configure a charger.
- Optional Can bus port, allowing a CAN equipped battery to control a charge.



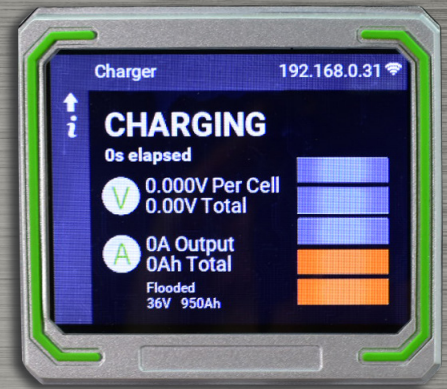
## Data Management

- Can be used with DCPT network management system.
- Provides detailed monitoring and logging of site performance, generating analytics and alarms





## Highly visible front indicator communicates multiple statuses:



## Flexibility

- Using 3 module types the E973 can meet your requirements for all North American three phase supplies; the E240 for 208 and 240VAC, E480 for 480VAC and E600 for 600VAC.
- Using 2 module types the E976 can meet your requirements for all North American three phase supplies; the E480 for 480VAC and E600 for 600VAC.
- All Three module types charge batteries from 24V through 96V battery configurations.
- The E976 charger model allows you to scale the output current from 100 to 600 amps maximum.
- All modules can charge flooded lead-acid, sealed, Gel, AGM, Lithium-ion and nickel-cadmium battery types.
- Each charger can be set up to charge multiple battery voltages and chemistries, using either the Auto-V Sensing, or a profile programmed from a BMM-BT battery module.

## Methodology

- The E970 series offers complete flexibility to perform in any application.
- Conventional, Opportunity and Fast Charge methods are easily programmable.
- Service mode can be used to apply constant current charges to restore under performing batteries.
- Customize and create your own profiles to meet your application.



## BMM-BT Battery Monitoring

- With PLC communication to the charger, there is no need for an external wire or connector.
- 24-96V nominal voltage, operating 14-140Vdc
- Continuous monitoring of all battery charge, discharge events up to 1300A.
- Continuous monitoring of the overall battery voltage and midpoint voltage measurement
- Continuous data logging, charge logs, alarm logs, including Ahr throughput for warranty compliance.
- Temperature measurement, Electrolyte level detection.
- Direct Bluetooth® communication for downloading data and programming needs.





## ECO Charge E970 series

Charger Model	E973							E976				
AC Confiruration	E240: 208-240VAC E480: 380-480VAC E600: 480-600VAC							E600: 480-600VAC E480: 380-480VAC				
Dimensions	12.4 x 11 x 14.3 in							12.4 X 20.5 X 14.3 in				
Weight	37.5 lbs with 3 modules							72 lbs with 6 modules				
Maximum Output	300 A							600 A				
Scalable Configuration	1-3 Modules							1-6 Modules				
Conformity Listings	cUL, UL, BC											
Battery Voltage vs Current Charge	24/36V 300A	48V 255A	72V 150A	80V 150V	96V 127A			24/36V 600A	48V 510A	72V 300A	80V 300A	96V 255A

Battery Voltage	24V36V	48V	72V/80V	96V
Max DC output per Module	100A	85A	50A	42.5A
Module Type 3 phase	E240	E480	E600	
AC Input Voltage Range	208V/240VAC	480VAC	480V/600VAC	

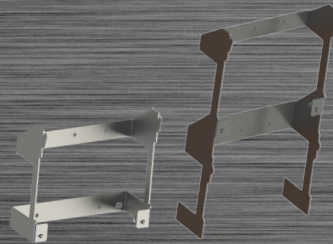


## Optional Accessories

### Universal Mounting Bracket

Mount charger on wall or rack

Custom floor stands for floor mounting  
dual charge stations available



### Stack Light

Empower your team

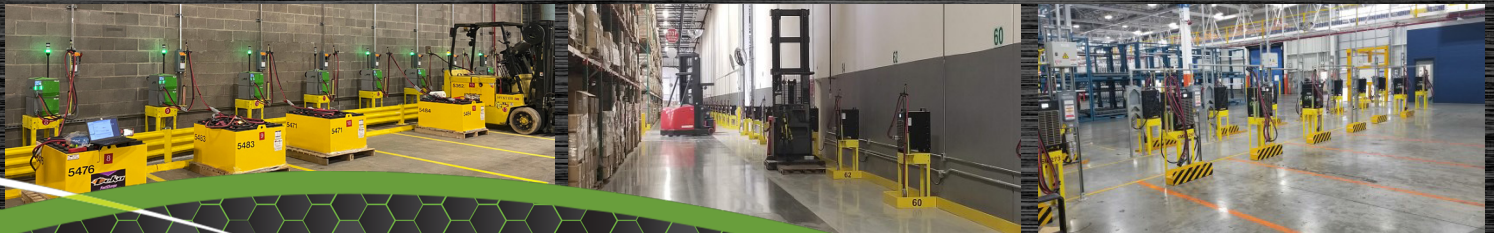
Visually communicate charge  
status with stack lights



DC Power Technologies offers over 60 years of Industrial Motive Power expertise for Chargers and Industrial Batteries, located in the beautiful Pacific northwest, of Everett Washington, DCPT is a UL Manufacturing inspection site with final assembly at our Everett location.

DCPT offers a National Sales and Service network of experienced dealers throughout the United States and Canada that offer local representation to support you with charging solutions, custom installation requirements, and technical support.

DC Power Technologies offers several accessories to improve charging and operational efficiencies with your Distribution centers, Plant operations, AGV vehicles, and warehouse needs.  
Contact our national sales headquarters for the best solution.



## Contact Information

727 134th ST SW Everett, WA 98204

[Sales@DCPowerTechnologies.com](mailto:Sales@DCPowerTechnologies.com)

National Sales Contact Info: 844-326-2474

24 Hour Technical Service Hotline: 206-855-5446